

The Kentucky Archivist

Newsletter of the Kentucky Council on Archives



LETTER FROM THE CHAIR

Megan Mummey, KCA Chair 2021-2022

Greetings Kentucky archivists,

It seems foolhardy to try to predict anything these days. Since KCA's last newsletter, we have had a Delta wave and then an Omicron wave of COVID-19. Here's hoping that this time, the state of the world will not force KCA to cancel another face-to-face meeting.

I am happy to announce the details of KCA's Spring 2022 meeting, which will be in person! We will be holding an outdoor meeting at the Farmington Plantation in Louisville, Kentucky, on May 18th. The meeting will be focused around discussions about documenting the history of enslaved peoples. First, we will hear from our museum colleagues involved with The Louisville Coalition on the History of the Enslaved and their work around documenting the lives of enslaved peoples on plantations in the Louisville area. The Coalition is a partnership between four Louisville historic houses and former sites of enslavement: Farmington Historic

VOLUME 44, ISSUE 1 | WINTER 2022

In this issue

Letter from the Chair	1-2
KCA Board News	2-3
Membership News	4-9
Events Calendar	10
KCA 2022 Spring Meeting Call	11
Sources	12
Membership Renewal	13



LETTER FROM THE CHAIR *continued*

Plantation, Locust Grove, Oxmoor Farm and Riverside, and the Farnsley Moremen Landing. Following their presentation, we will have breakout discussion sessions focused on how archivists can participate in this work and how we can ethically document the history of enslaved peoples. The conference will also include a box lunch from a Louisville restaurant and a lightning round of presentations.

I for one am looking forward to interacting with my fellow archivists and hearing about everyone's current work. Fingers-crossed for a beautiful day on May 18th!

Megan Mummey

WINTER TREASURY REPORT

Sandra Baird, Treasurer

Annual Dues Collected, to date: **\$921.30**

Membership as of December 31, 2021:
49 members

Bank Balance (including interest):
\$9,208.28

PayPal Balance: **\$2,305.78**

Total Funds available as of December 31, 2021: **\$11,514.06**

Quarterly Income/Expenditures (Oct)

Interest Earned October - November: **\$1.17**

Membership dues: **\$98.90**

Archives Month Donation: **-\$225.00**

Printing and Mailing reimbursement: **-\$137.80**

Dues refund: **-\$21.00**

Total Quarterly Income: **-\$283.73**

Submitted on the 13th of January.

KCA BOARD

Megan Mummey, Chair
University of Kentucky

Danielle Spalenka, Past Chair
Filson Historical Society

Ruth Bryan, Vice Chair
University of Kentucky

Sandra Baird, Treasurer
Georgetown College

Ida Sell, Secretary
University of Kentucky

Dieter Ullrich, Member-at-Large
Morehead State University

Heidi Taylor-Caudill, Member-at-Large
John James Audubon State Park Museum

Mark C. Meade, Webmaster
Bellarmine University

Cathrine Giles, Newsletter Editor
Kentucky Department for Libraries and Archives

[Learn about KCA Governance here.](#)

KCA BOARD NEWS *continued*

Call for Board Nominations

Are you interested in serving on the KCA Board? Consider nominating yourself (or someone you know!) for one of the following positions:

- Vice Chair
- Secretary

Each position is a three-year term. The elected Vice Chair will serve as Chair during the second year and Past Chair in the third year. In order to serve on the Board, you must be a KCA member in good standing. Board members are expected to attend business meetings and KCA events. The Board facilitates the operations of the organization, plans membership meetings and events, and advocates for the professional interests of its members.

Nominations should be sent to Megan Mummey (Megan.Mummey@uky.edu) or Ruth Bryan (Ruth.Bryan@uky.edu) by April 29, 2022.

KCA 2021 Fall Meeting Recap

Submitted by Danielle Spalenka

Our fall meeting was once again held virtually Friday, November 12, 2021. Members from across the commonwealth gathered to discuss various issues related to copyright. Members viewed "When Copyright Ends (or Never Was): Understanding the Public Domain" that was made freely available from [Lyrasis](https://www.lyrasis.org/). Participants either watched it the morning of or had the option to view on their own. The webinar learning outcomes were as follows:

- Identify relevant facts and law to assess when copyright protection begins
- Identify whether a given work is or is not encumbered by copyright
- Apply basic rules and standards for copyright eligibility to examples based on real-world situations
- Apply basic rules to measure the duration of copyright, including the important threshold question of whether a work has been published
- Distinguish between types of works that are eligible for copyright protection and those that are not (i.e., born public domain)

Once the pre-recorded content finished, participants gathered into virtual breakout rooms to discuss case studies and ask questions around the webinar and from real-life copyright scenarios. Once the breakout sessions concluded, participants gathered back for an informal discussion. We also then had a chance to virtually catch up and socialize during a brown bag virtual meet-up.



When Copyright Ends (or Never Was): Understanding the Public Domain



To the extent possible under law, Brandon Butler and Greg Cram waive all copyright and related or neighboring rights to When Copyright Ends (or Never Was): Understanding the Public Domain. This work is published from: United States. Embedded 3rd party materials are not subject to this waiver, and are attributed with rights info where possible.

 LYRASIS

KCA MEMBERSHIP NEWS

News from The Filson Historical Society

Submitted by Danielle Spalenka

New staff, promotions, and new digital projects!

Welcome Kelly Hyberger! The Filson's newest Collections team member, Kelly Hyberger, is leading us through the important work of addressing our Native American collections.

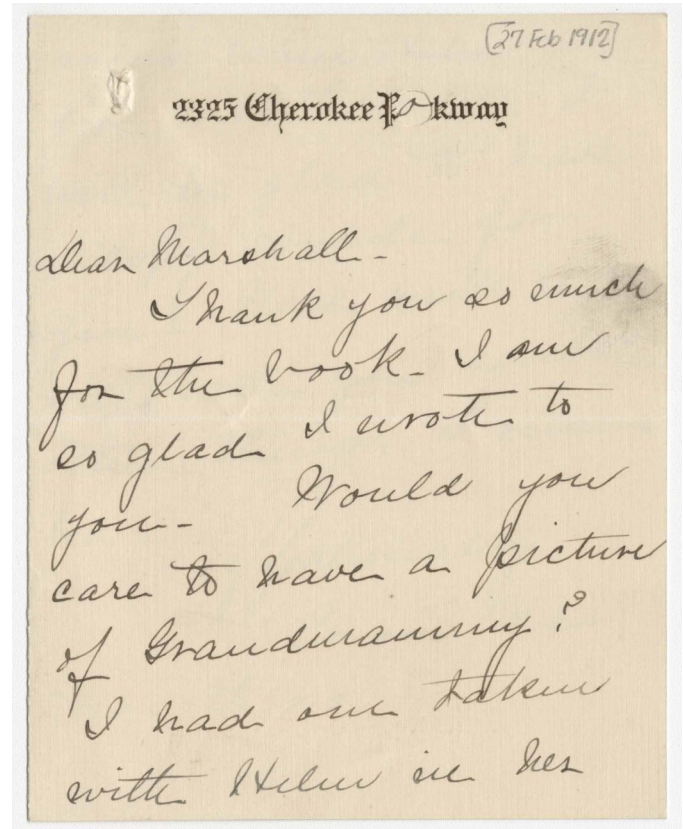
Congrats to Brooks Vessels, who has a new title and additional responsibilities as Assistant Museum Curator and Exhibits Designer. Brooks is extending her role in collections stewardship including inventory, cataloging, accessioning, deaccessioning, preservation, interpretation, reference support, and more. She is also taking a lead role in the physical design of exhibitions.

Sanders-Bullitt Digital Collection is a reworking of the Bullitt family papers to highlight the people enslaved by the Bullitt family on the Oxmoor plantation and the Cottonwood plantation from the late eighteenth century to the early twentieth century. We hope the digitization of and open access to these materials can aid descendants of these families in their search for their ancestors. View the online collection here: <https://filsonhistorical.omeka.net/collections/show/73>

Filson Collections Assistant Emma Johansen has written a two-part blog piece for the National Council on Public History about this project and its intended healing power. Emma comments, "I think this is what reckoning with slavery means. I think it means that we sit, uncomfortably, in this silence. I think it means that we mourn the stories we will never know because people failed to see them as valuable enough to record. This digital collection was first proposed as a

launchpad for future projects both in and out of our institution, but more than anything, it's meant to aid the descendants of enslaved people in taking back their history and finding their way out of the silence. We hope that this resource does them justice." Read "Metadata as restorative justice: a case study of the Sanders-Bullitt digital collection—Part I" here: <https://ncph.org/.../metadata-as-restorative-justice-part-i/> and part II here: <https://ncph.org/.../metadata-as-restorative-justice.../>

Sustaining Slavery Digital Collection - These resources include the NEW story map project and digital database titled "Sustaining Slavery: Mapping Kentucky's Support for the Domestic Slave Trade." Utilize the interactive map to learn about the locations and



KCA MEMBERSHIP NEWS

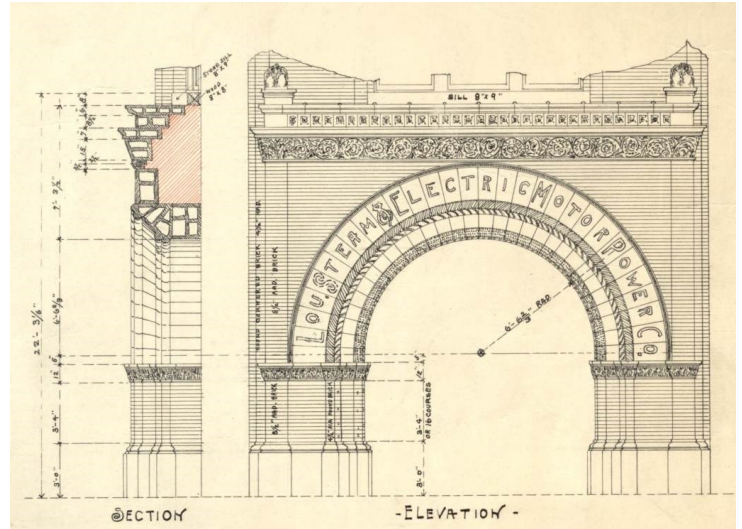
News from The Filson Historical Society *continued*

Submitted by Danielle Spalenka

operations of Ohio Valley businesses that fed, clothed, transported, and processed the products of plantations in Kentucky and down the Mississippi Valley. Reference the keyword and commodities indexes to search for terms connected to enslaved labor. Discover the research methods implemented and source material used throughout the project. Explore this digital resource, which intends to provide a broader understanding of slavery, the commodification and exploitation of over four million Black enslaved people, and the legacy and implications of this institution on our world today. Access here: <https://l.linklyhq.com/l/hnug>

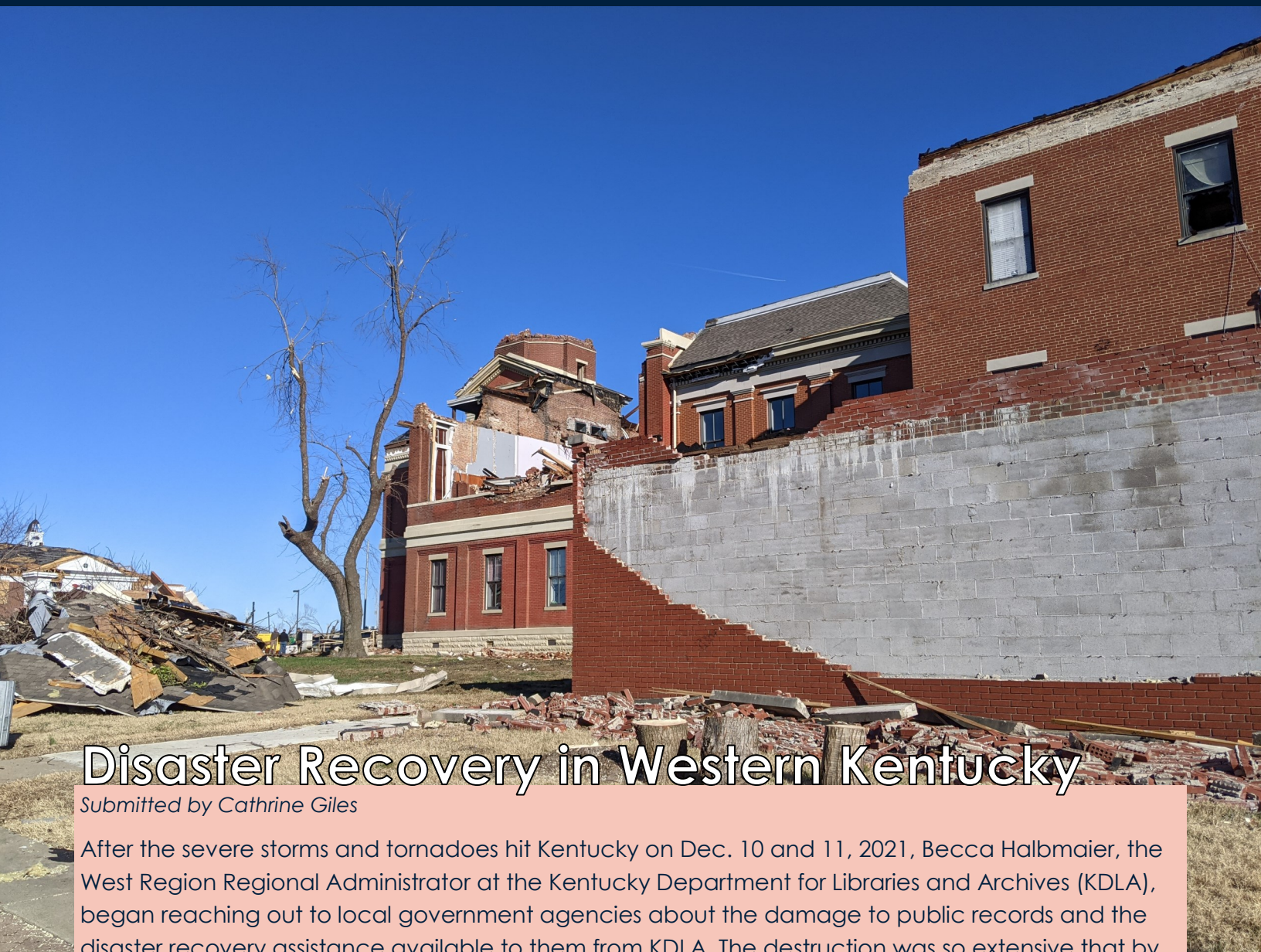
Research and writing by: Dorian Cleveland, University of Kentucky; Georgia Coats, Smith College; and Patrick Lewis, Filson Historical Society.

Forgotten Foundations: Louisville's Lost Architecture – Downtown Louisville is the foundation and heart of the city, central to



daily life for much of its history, but in recent years many of its historic buildings have been lost. The Filson will explore the rise, fall, and revitalization of the urban core in our exhibit *Forgotten Foundations: Louisville's Lost Architecture*. Filson Historical Society, 1310 S. 3rd Street, Louisville, Kentucky (502) 635-5083. **February 18-September 23, 2022, M-F 9:30 a.m. - 4:30 p.m.**





Disaster Recovery in Western Kentucky

Submitted by Cathrine Giles

After the severe storms and tornadoes hit Kentucky on Dec. 10 and 11, 2021, Becca Halbmaier, the West Region Regional Administrator at the Kentucky Department for Libraries and Archives (KDLA), began reaching out to local government agencies about the damage to public records and the disaster recovery assistance available to them from KDLA. The destruction was so extensive that by the following Tuesday some local officials were just getting internet service back and many still did not have access to power or phones.

While many local agencies reported minimal records loss and damage, others were not so fortunate. The Graves County Courthouse was destroyed, forcing state and county offices including the sheriff, county clerk, county attorney, judge executive and property valuation administrator to relocate. These important community records were removed as soon as possible to protect them. Professional restoration companies Prism Specialties and SERVPRO were on location to remove nearly all of the records from the courthouse to immediately freeze and transfer for recovery efforts, while the sheriff's and jailer's offices boxed and relocated their records to maintain chain of custody.

With Halbmaier at the front lines, KDLA's Archives and Records Management Division staff in Frankfort, about 260 miles away, hurried to gather a list of all the local public records from agencies in the affected counties and cities that had been maintained at KDLA in Frankfort. State Archivist Terry Manuel and Local Records Branch Manager Nicole Bryan worked quickly to create a local records emergency disaster recovery assistance grant, which the State Libraries, Archives, and

Records Commission approved at an emergency meeting on Dec. 17. Staff contacted local agency organizations and associations to share contact information about grants and KDLA services. Storage boxes and dehumidifiers were ordered and delivered to Halbmaier for distribution to the local agencies hit by the disaster.

Unfortunately, some local records were relocated before they could be frozen and transferred. These boxes were damp, stacked and showing signs of mold and contamination. After further discussion with the appropriate local agencies, Prism picked up the records for freezing and transfer. While some of these records may have been eligible for proper records destruction by KDLA, they could not be identified as such in a safe and certain manner.

The Council of State Archivists and the Friends of Kentucky Public Archives, Inc., were quick to reach out to KDLA and to offer assistance with the records damage in Western Kentucky. Both organizations have allocated funds totaling \$6,000 to the recovery efforts. Thanks to their generosity, these funds will go toward additional equipment such as dehumidifiers, milk crates, and other costs associated with recovery.

Without the quick action of all involved in KDLA, the Council of State Archivists, and the Friends of Kentucky Public Archives, Inc., valuable local records such as marriage licenses, deeds, wills and other important legal documents would have been lost.



Local government agencies may apply for the emergency disaster recovery assistance grant [here](#). The deadline to apply is March 31, 2022.

KCA MEMBERSHIP NEWS

News from Kentucky Department for Libraries and Archives *continued*

Submitted by Rusty Heckaman, Nicole Bryan, and Cathrine Giles

New faces at KDLA!

The Archival Services Branch welcomes an Archivist I to the Archives Research Room, the Local Records Branch welcomes two Regional Administrators, and the State Records Branch welcomes a Stores Worker II!

Brynne Stevens began work at KDLA as an Archivist I on January 17, 2022. She will primarily assist patrons with their research and process archival collections.

Brynne previously worked at the University of Kentucky Special Collections Research Center in various roles, the last of which was a part time Assistant Archivist. In this role, she was responsible for processing the papers of Senator Wendell Henry Ford. Brynne has experience with archival description, preservation, and arrangement as well as historical research.

Brynne has a Bachelor of Arts in History from the University of Kentucky and a Master of Library and Information Science from the University of Southern Mississippi. Brynne currently lives in Frankfort, where she has lived all her life.

David Atha joined the Local Records Branch as East Region Regional Administrator on January 18, 2022. He comes to KDLA from the Transportation Cabinet, where he served the previous six years as a supervisor and records custodian. David enjoys spending time out of doors, playing golf, hiking, and grilling. Some of his favorite reading topics are military history, political theory, and theology. A huge fan of Tolkien, David has read through *The Lord of the Rings* at least seven times. David is originally from Shelby County, and now resides in Frankfort with his dear wife Leah and their children, Oliver and Callie.

Andrew (Drew) Preston is a graduate of KY State University with a B.A. in Pure Mathematics and a B.S. in Computer Science. He came to KDLA from the Department of Revenue where he most recently worked in the Tax Fraud and Evasion Prevention Branch performing analytics to combat ID theft and tax fraud.

He currently lives in Lawrenceburg, KY with his wife, Meagan, and their six cats. In his free time, he enjoys playing video and tabletop games and reading sci-fi and fantasy novels. Drew joined the Local Records Branch as a South Central Region Regional Administrator on January 18, 2022.

Shane Sanderson has worked at the State Records Center for eight years and as a full time state employee since December 1, 2021. Shane currently lives in Frankfort Kentucky with his wife and three children. In his free time he enjoys spending time with his family, cooking, reading, and watching movies and anime.



KCA MEMBERSHIP NEWS

News from the Thomas Merton Center

Submitted by Mark Meade

Tommie and Frank O'Callaghan Gallery dedicated and papers donated to the Thomas Merton Center

[The Thomas Merton Center](#) named a primary exhibit area the "Tommie and Frank O'Callaghan Gallery" in honor of Thomasine (Tommie) O'Callaghan (1931-2014), who with her husband Frank (1929-2011) was a close friend of Thomas Merton and one of the original members of the Thomas Merton Legacy Trust on which she served from 1967 to 2009. The plaque was revealed November 13, 2021, on the fifty-fourth anniversary of the establishment of the trust governing Merton's papers signed in 1967.

Earlier this year, the O'Callaghan family donated the papers of Tommie O'Callaghan, which includes correspondence with Merton, a collection of Merton books and memorabilia, and papers related to the Merton Legacy Trust.

News from the Southern Baptist Theological Seminary

Submitted by Adam Winters

Update on Southern Baptist Theological Seminary Renovations

In December, [Southern Baptist Theological Seminary](#) announced an extensive renovation plan for the James P. Boyce Centennial Library.

During this period, the library must remain closed to all visitors.

Archives staff will continue to serve research needs remotely through phone, email, and digital delivery of resources. The renovation process is expected to last through 2023.

Have something to share? We accept short articles, reviews of archival texts, collection highlights, job postings, staff news, and more! Send your submissions to Cathrine.Giles@ky.gov.



UPCOMING EVENTS

Midwest Archives Conference

May 5 – 7 | Madison, Wisconsin



Join hundreds of archivists, curators and information professionals from a 13-state region and beyond to find out what MAC has to offer you. There are a number of tools available on this site to help current MAC members connect to other members, learn about upcoming events, manage their online profiles, and much more! [Details here!](#)



KCA Spring 2022 Meeting

May 18 | Louisville, Kentucky

Taking place in person and at [Farmington](#), this meeting will focus on documenting the history of the enslaved. But since it has been over two years since we have been able to hold a conference in person, we will also have a lightning round of presentations to connect with members. [Details on page 11!](#)



ARCHIVES * RECORDS 2022

August 20 – 27 | Boston, Massachusetts

The annual meeting of the Society of American Archivists, held in late summer in different cities throughout the country, includes a wide array of informative education sessions, pre-conference workshops, networking opportunities, special events, exhibits, and tours of local repositories. [Details here!](#)

Have an event or know of one that might be of interest? Email mmeade@bellarmine.edu to include it on the [KCA online events calendar!](#)

KCA 2022 Spring Meeting

Call for Proposals

The KCA 2022 Spring Meeting will take place in person at Farmington in Louisville, Kentucky, on May 18th. The Louisville Coalition on the History of the Enslaved, of which Farmington is a member, will present on their efforts to document the history of the enslaved in Louisville. But since it has been over two years since Kentucky archivists have been able to gather in person, we will also hold a lightning round of 5-10 minute presentations to keep connected with our membership. The theme is completely open! Possible topics include:

How have priorities shifted during the past year?

New or completed projects

New workflows or processes

Ways to reconnect with users after the pandemic

Approaches to boosting morale, mental health, and work/life balance

Proposals due April 4, 2022.

[Submit your proposals here!](#)

Image Credits

Submit photos to include in the newsletter!

Front Page: Photo of Belknap Hall (girls' dormitory) at the Lincoln Institute. Belknap Hall was originally a girls' dormitory on the campus of the Lincoln Institute, an institution that served a leading role in the education of African Americans in Kentucky from 1912 – 1966. The Lincoln Institute campus is located in Shelby County, Kentucky, and is on the National Register of Historic Places.

Source: *Public Information Photo Collection, Archives and Records Management Division – Kentucky Department for Libraries and Archives, ca. 1950s.*

Page 3: Slide from the Lyrasis presentation, "When Copyright Ends (or Never Was): Understanding the Public Domain."

Source: *Greg Cram and Brandon Butler, Lyrasis*

Page 4: Letter to William Marshall Bullitt from Mildred Chenoweth Stites discussing Louisiana Taylor, February 27th, 1912.

Source: *Manuscript Collection, Bullitt Family Papers, The Filson Historical Society*

Page 5: Upper Right — An architectural drawing of one section of the Louisville Steam & Electric Motor Power Co. building.

Source: *The Filson Historical Society*

Bottom Center -- A collage of photos of The Filson Historical Society.

Submitted by: *Danielle Spalenka, The Filson Historical Society*

Page 6: Photo of the damage done to the exterior of the Graves County Courthouse. The vault and upper floors are visible. December 12, 2021.

Source: *Rebecca Halbmaier, Kentucky Department for Libraries and Archives*

Page 7: Photo of the damage done to the exterior of the Graves County Courthouse. The front of the building is visible. December 12, 2021.

Source: *Rebecca Halbmaier, Kentucky Department for Libraries and Archives*

Page 8: Photo of the Originals Room at the Kentucky Department for Libraries and Archives. 2017.

Source: *Cathrine Giles, Kentucky Department for Libraries and Archives*

Page 10: Photo of the Hearing Room at the Kentucky Department for Libraries and Archives. 2021.

Source: *Cathrine Giles, Kentucky Department for Libraries and Archives*



Membership Form

KCA Dues (May 1, 2022 – April 30, 2023)

KCA membership cycle goes from May 1-April 30 and is **\$20**.

Please fill out this form as if it were a mailing label to you. You can email the form to the KCA treasurer, Sandra Baird, at Sandra_Baird@georgetowncollege.edu or you can mail it to the address at the bottom of the page.

PLEASE DO NOT USE PERSONAL INFORMATION YOU WOULD NOT WANT ON THE KCA WEBSITE!

We accept membership dues via PayPal, although there is an additional \$1 convenience fee. Please see the membership page of the KCA website to pay your dues electronically. <http://www.kyarchivists.com/membership/>

Name: _____

Institution: _____

Address: _____

Phone: _____ Email: _____

_____ Include my name and contact information on the KCA website membership directory.

_____ Do not include my name and contact information on the KCA website membership directory.

Send dues checks to:

**Sandra Baird
400 E. College St.
Georgetown, KY 40324**

Make Checks Payable to: Kentucky Council on Archives

The Kentucky Council on Archives, a professional membership organization, does not discriminate on the basis of race, color, national origin, sex, age, religion, or disability and provides, on request, reasonable accommodation including auxiliary aids and services necessary to afford an individual with a disability an equal opportunity to participate in all services, programs, and activities. Persons requiring special accommodation or auxiliary aids must notify a member of the KCA board thirty (30) days prior to a meeting so that the proper arrangements can be made.